

AXIS Camera Station

Comprehensive video management software for monitoring, recording, playback and event management.



- > Up to 100 cameras
- > Scheduled and event-driven recording
- > Intuitive handling
- > Control of PTZ and dome cameras
- > Site maps
- > Remote viewing and control

AXIS Camera Station is a complete monitoring and recording system for up to 100 cameras. Designed for Axis network video products, this software offers easy installation and setup with automatic camera discovery and powerful event configuration wizard, as well as efficient management of cameras in the system.

View and record high quality video and audio from up to 100 cameras with H.264, MPEG-4 and Motion JPEG video compression. Support for H.264 video compression enables optimization of bandwidth and storage efficiency by significantly reducing the bit rate without compromising image quality.

Scheduled and event-driven recordings are triggered by motion or external inputs. AXIS Camera Station utilizes camera based motion detection to save bandwidth and disk space. Manual recording can be triggered directly in the live view interface.

AXIS Camera Station is developed with focus on ease-of-use and intuitive handling offering efficient management of cameras and video in the system.

Powerful recording search with timeline visualization and export functionality. Support for Site Maps makes it possible to render a full overview of the monitored area as well as gain quick access to any Axis network camera in the installation.

Control of PTZ and dome cameras using a joystick or mouse gives responsive and accurate control of the pan, tilt, zoom functionality. Support for digital PTZ is available in both live view and playback.

The Windows client can be installed on any computer, enabling remote viewing and control from anywhere on the corporate network or the Internet.

Technical specifications – AXIS Camera Station

Camera		Triggers & Events	
Models	Compatible with Axis network video products running firmware 4.30 or higher	Event recording	Events triggered by video motion detection, Active Tampering Alarm, AXIS Cross Line Detection, external inputs, manual trigger, system triggers and device event triggers
Number of channels	Up to 100	Scheduled recording	Schedule per camera allows customization of weekday and weekend recordings
Video		Motion detection	Advanced camera-based motion detection for low bandwidth utilization
Video compression	H.264 (MPEG-4 Part 10/AVC) MPEG-4 Part 2 Motion JPEG	Input/output control	Advanced control of cameras' digital inputs/outputs
Resolutions	Supports connected Axis video product resolutions	Alarm notification	Visual indication, audible alert, traybar notification, switch to camera/view, go to PTZ preset, email, alarm procedure, acknowledgement of alarms
Recording frame rate	3000 fps or more on recommended hardware	Logs	Alarm, event and audit logs
Audio		System	
Audio streaming	One-way audio	Minimum system requirements	Windows 7 Professional, Vista Business, XP Professional (server and/or client), 2008 Server R2, 2008 Server, 2003 Server (server only, 64 bit OS recommended for larger systems) Always use the latest service packs Microsoft .NET runtime environment (included in installation package)
Audio compression	AAC G.711 G.726	Minimum computer requirements – client	CPU: Intel P4 or higher, 2 GHz (Intel Core i7 recommended for larger systems) RAM: 1 GB (4 GB recommended for larger systems) Graphics card with full DirectX 9.0 hardware acceleration and onboard video memory of 256 MB or more Important! Use latest graphics card driver and DirectX runtime
Recording server		Minimum computer requirements – server	CPU: Intel P4 or higher, 2 GHz (Intel Xeon recommended for larger systems) 1 GB RAM (8 GB recommended for larger systems)
Security	Multiple user access levels with password protection using local or Windows domain users (Active directory)	Recommended network	100 Megabit network (Gigabit network recommended for larger systems)
Installation and setup	Automatic camera discovery Efficient camera management Powerful event configuration wizard	Recommended hard disk configuration	At 30 fps in VGA: up to 15 cameras/hard disk
Recording storage	Unlimited recording database, limited only by disk space Record directly to local and network disks Duration can be limited per camera to conform to local legal requirements Fail-over recording in cameras Locking of prioritized recordings	General	
Client	AXIS Camera Station Client (for Windows) included for local and remote viewing, playback and administration	Languages	English, French, Italian, German, Spanish, Polish, Russian, Korean, Japanese, Chinese, Swedish, Danish, Turkish, Arabic and Persian
Live view		Licenses	AXIS Camera Station base licenses for 4 or 10 cameras/channels to be used on one single dedicated PC/server Additional licenses in +1, +5 or +20 up to 100 cameras/channels One year support license included in initial base license Future support and upgrades require a yearly support license 30-day demo can be upgraded to licensed version
Camera live view	Flexible live view configuration of up to 100 cameras, Axis' Corridor Format™, multiple monitors Hot-spot, camera/view sequence, site maps, web page	License registration	Register automatically over the Internet or manually at www.axis.com within a five day grace period
PTZ	Control of PTZ and dome cameras using mouse or joystick Area zoom, Digital PTZ Programmable hot-keys	Included accessories	Installation Guide CD with software and User's Manual
Image enhancement	Improved live and recorded video quality in challenging conditions such as snow and fog		
Playback			
Search for recordings	Search for recordings based on camera, date and time Timeline visualization, smart search, bookmarks		
Playback	Playback speed: up to 64x or frame by frame Graphical timeline for quick overview of events		
Synchronized playback	Playback of video and audio from up to 25 cameras simultaneously		
Export	Manual and scheduled export Single images in JPEG format or video sequences in ASF format Digital signature on exported recordings Standalone player		

More information is available at www.axis.com

Optional accessories

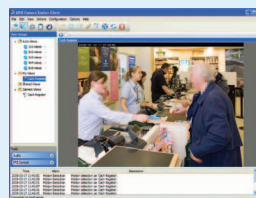
AXIS T8310 Video Surveillance Control Board for responsive and accurate pan/tilt/zoom control of cameras.



AXIS P8221 Network I/O Audio Module enhances video surveillance systems with additional I/O and superb audio quality.



AXIS Camera Station One – free of charge



Software solution for viewing and recording live video from a single Axis network camera.